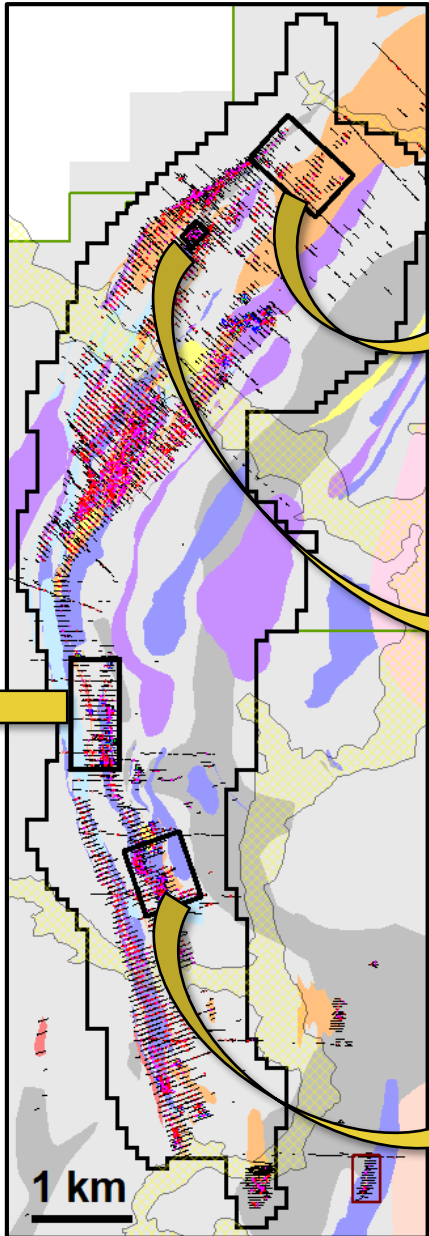


# 2018 Mining Lease Programme

- **HG oxide and shallow sulfide targets**
- **4 target areas**
- **12,193 m RC**
- **3,756 m core drilling**
- **Q2'18 programmes**



**Maga North Target Area**  
3 structures currently poorly defined, all of them with HG intercepts  
37 RC holes (2,733 m)  
8 core holes (1,166 m)

**Maga Hill Area**  
Folded granodiorite hosted in sheared meta-gabbro (with several HG intercepts)  
6 RC holes (367 m)  
10 core holes (1,245 m)

**P11 Target Area**  
Continuation of H2'17 program, targeting HG oxide and shallow HG sulfide mineralization associated with folded granodiorite  
74 RC holes (4,015 m)  
12 core holes (1,346 m)

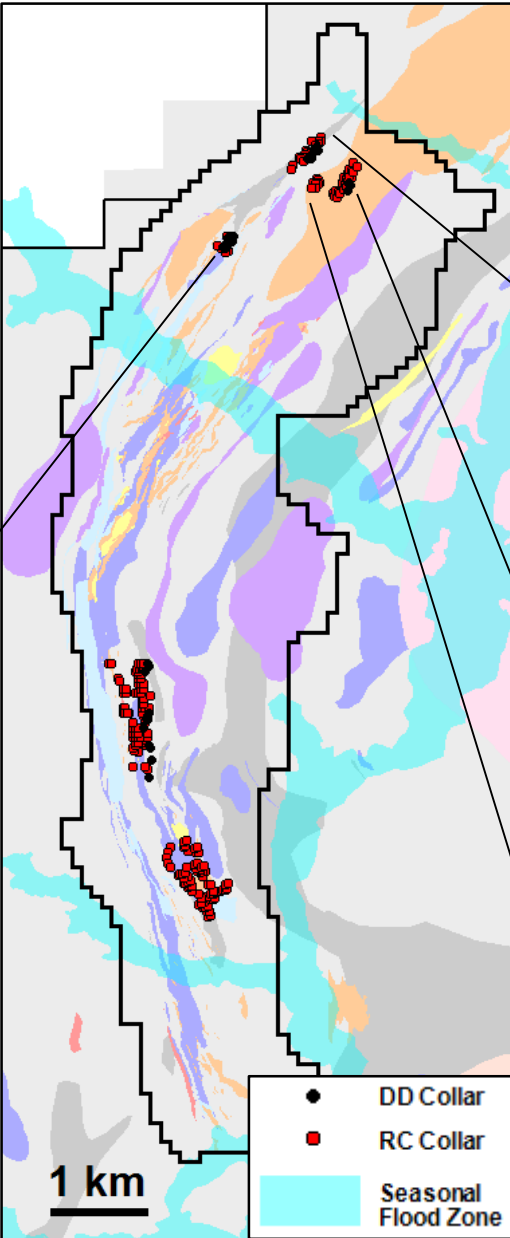
**Siga East Target Area**  
Continuation of H2'17 program, targeting HG oxide mineralization associated with folded granodiorite  
71 RC holes (4,301 m)

# 2018 Mining Lease Maga Exploration Highlights



**Maga Hill Zone**  
(Sections 3675 N to 3500N)

- 9.0 m @ 3.1 gpt
- 10.0 m @ 2.3 gpt**
- 5.0 m @ 2.1 gpt
- 16.0 m @ 4.6 gpt
- 7.0 m @ 5.7 gpt
- 7.5 m @ 2.0 gpt
- 15.5 m @ 1.2 gpt
- 6.55 m @ 2.8 gpt**
- 13.0 m @ 1.1 gpt
- 23.5 m @ 4.3 gpt
- 13.0 m @ 4.0 gpt
- 12.5 m @ 4.3 gpt
- 11.0 m @ 1.1 gpt**
- 11.0 m @ 2.5 gpt
- 2.2 m @ 5.8 gpt**
- 16.0 @ 5.2 gpt
- 14.0 m @ 1.3 gpt
- 10 m @ 1.1 gpt
- 10.0 m @ 2.2 gpt
- 10.0 m @ 1.3 gpt
- 11.0 @ 1.0 gpt
- 10.0 @ 1.0 gpt
- 7.0 m @ 1.5 gpt
- 9.0 @ 1.1 gpt



2018 oxide result: 6.6 m @ 2.9 gpt  
2018 sulphide result: **7.1 m @ 2.3 gpt**

**Maga FW Zone**  
(Sections 4900 N to 4625N)

- 6.6 m @ 2.9 gpt
- 8.0 m @ 2.6 gpt
- 12.0 m @ 3.0 gpt
- 7.1 m @ 2.3 gpt**
- 5.0 m @ 3.2 gpt**
- 20 m @ 1.6 gpt
- 18 m @ 1.2 gpt

**Maga 3645 Zone**  
(Sections 4875 N to 4675N)

- 14.0 m @ 1.3 gpt
- 4.0 m @ 17.8 gpt**
- 10.0 m @ 1.1 gpt
- 10.0 m @ 2.2 gpt
- 10 m @ 1.3 gpt

**Maga 3653 Zone**  
(Sections 4675 N to 4575N)

- 11.0 m @ 1.0 gpt
- 10.0 m @ 1.0 gpt
- 7.0 m @ 1.5 gpt
- 9.0 m @ 1.1 gpt

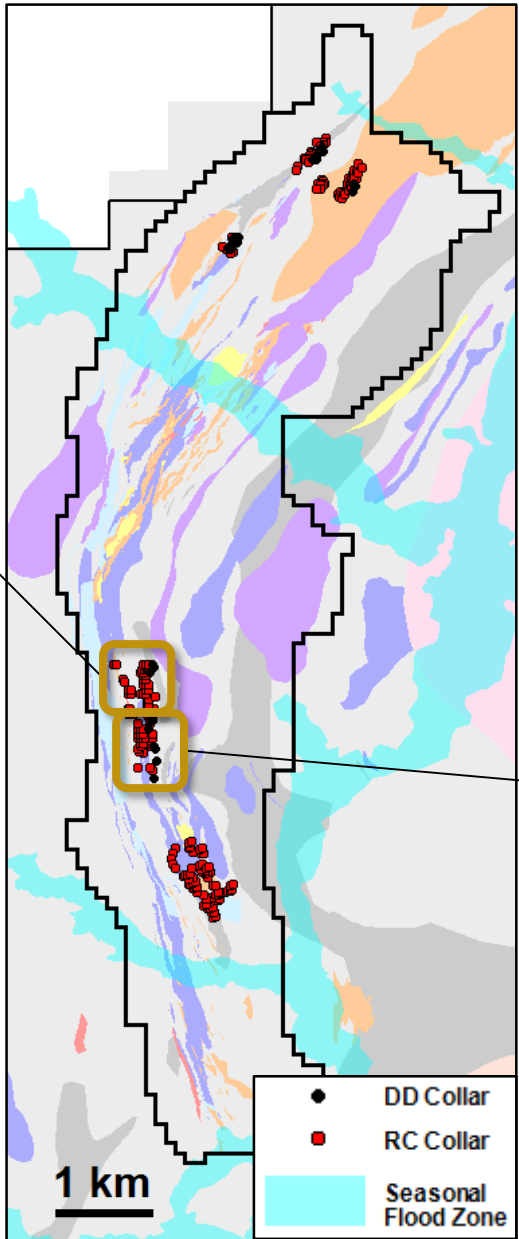
# 2018 Mining Lease P11 Exploration Highlights



## P11 Zone

(Sections 49375 N to 48850N)

- 6.0 m @ 2.6 gpt
- 3.0 m @ 3.5 gpt
- 8.0 m @ 2.2 gpt
- 8.0 m @ 1.9 gpt
- 6.0 m @ 6.1 gpt
- 4.0 m @ 3.6 gpt
- 12.0 m @ 1.7 gpt
- 7.0 m @ 2.0 gpt
- 10.0 m @ 1.6 gpt
- 5.0 m @ 2.9 gpt
- 8.0 m @ 1.7 gpt
- 4.0 m @ 3.7 gpt
- 9.0 m @ 1.3 gpt
- 11.0 m @ 2.2 gpt
- 4.0 m @ 2.6 gpt
- 1.0 m @ 48.9 gpt
- 6.0 m @ 3.9 gpt



2018 oxide result: 5.0 m @ 4.4 gpt  
 2018 sulphide result: 13.0 m @ 0.8 gpt  
 2017 oxide result: 5.0 m @ 3.3 gpt

## P11 Zone

(Sections 48825 N to 48225N)

- 5.0 m @ 3.3 gpt
- 5.0 m @ 4.4 gpt
- 5.0 m @ 4.8 gpt
- 7.0 m @ 1.5 gpt
- 6.0 m @ 2.0 gpt
- 3.0 m @ 5.4 gpt
- 5.0 m @ 2.4 gpt
- 5.0 m @ 2.2 gpt
- 13.0 m @ 0.8 gpt
- 13.0 m @ 1.4 gpt
- 6.0 m @ 3.5 gpt
- 13.0 m @ 1.4 gpt
- 9.0 m @ 1.3 gpt
- 3.0 m @ 4.2 gpt
- 8.0 m @ 3.5 gpt

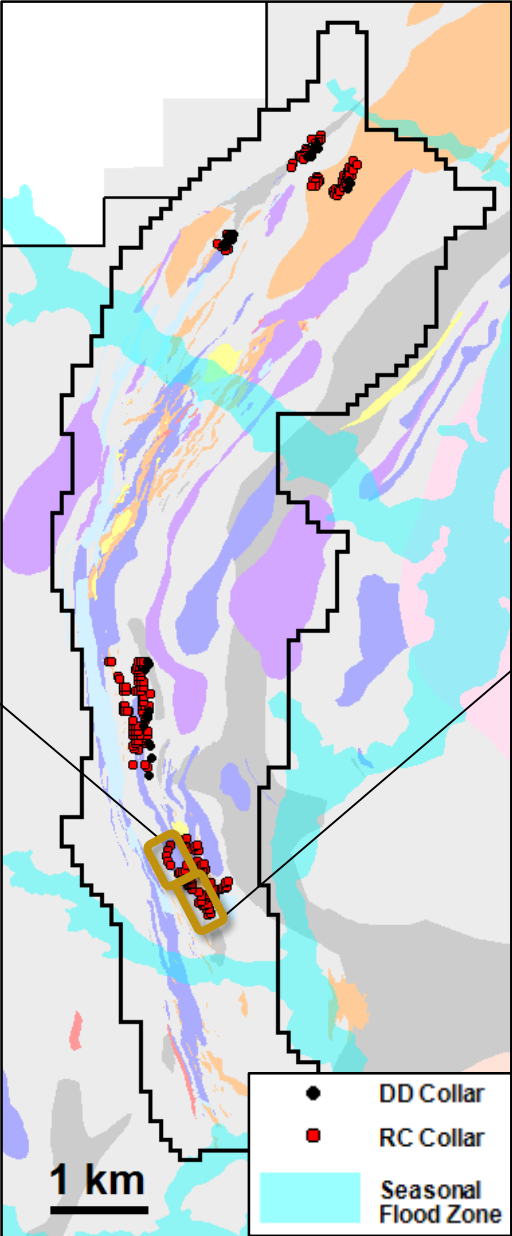
2018 oxide result: 6.0 m @ 3.8 gpt  
 2017 oxide result: 5 m @ 2.1 gpt

## Siga East

(Main Footwall Zone)

(Sections 12575 N to 12225N)

- 14.0 m @ 1.6 gpt
- 26.0 m @ 2.4 gpt
- 8.0 m @ 1.9 gpt
- 10.0 m @ 1.3 gpt
- 18.0 m @ 1.0 gpt
- 25.0 m @ 0.9 gpt
- 9.0 m @ 1.2 gpt
- 8.0 m @ 2.1 gpt
- 13.0 m @ 1.2 gpt
- 16.0 m @ 2.3 gpt
- 9.0 m @ 1.2 gpt
- 24.0 m @ 1.0 gpt
- 3.0 m @ 25.0 gpt
- 3.0 m @ 4.1 gpt
- 12.0 m @ 1.2 gpt
- 4.0 m @ 10.8 gpt
- 6.0 m @ 1.9 gpt
- 2.0 m @ 7.6 gpt
- 4.0 m @ 14.4 gpt
- 2.0 m @ 5.4 gpt
- 3.0 m @ 3.4 gpt
- 11.0 m @ 1.0 gpt



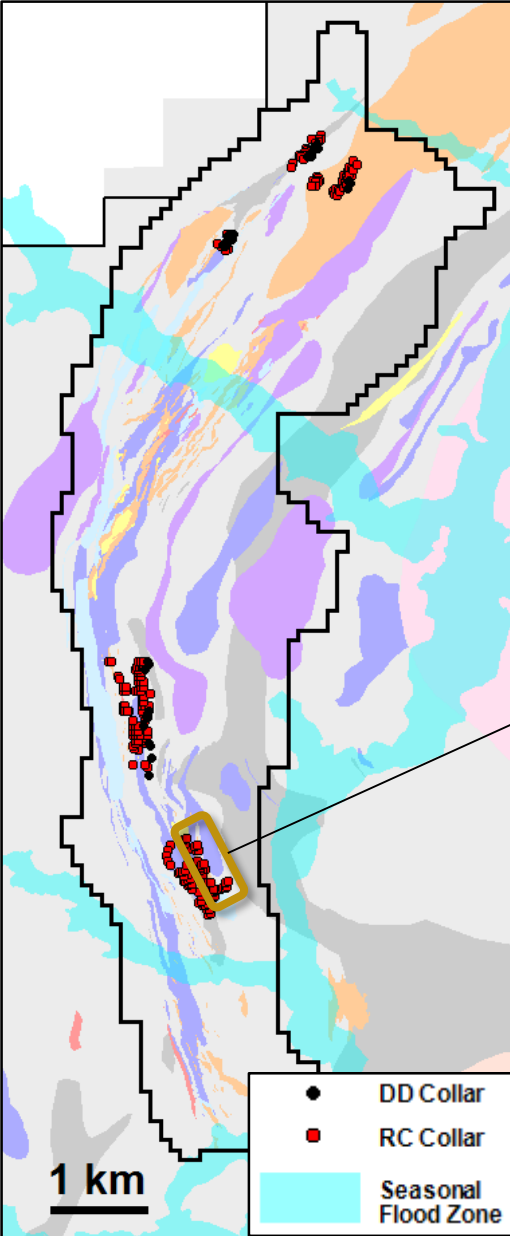
## Siga East

(Main Footwall Zone)

(Sections 12200 N to 11775N)

- 6.0 m @ 2.1 gpt
- 9.0 m @ 1.4 gpt
- 9.0 m @ 5.4 gpt
- 7.0 m @ 5.8 gpt
- 6.0 m @ 1.8 gpt
- 6.0 m @ 3.8 gpt
- 6.0 m @ 3.4 gpt
- 9.0 m @ 1.5 gpt
- 10.0 m @ 1.4 gpt
- 7.0 m @ 2.1 gpt
- 11.0 m @ 0.9 gpt
- 13.0 m @ 1.4 gpt
- 11.0 m @ 0.9 gpt
- 13.0 m @ 1.0 gpt
- 11.0 m @ 1.0 gpt
- 10.0 m @ 1.2 gpt
- 11.0 m @ 2.4 gpt
- 7.0 m @ 2.1 gpt
- 10.0 m @ 1.5 gpt
- 15.0 m @ 1.3 gpt
- 2.0 m @ 7.2 gpt
- 1.0 m @ 22.9 gpt
- 10.0 m @ 1.0 gpt

# 2018 Mining Lease Siga East Exploration Highlights



2018 oxide result: 7.0 m @ 1.5 gpt  
2017 oxide result: 6 m @ 2.5 gpt  
2017 sulphide result: **5 m @ 3.2 gpt**

**Siga East**  
**(Hanging Wall Zones)**

- 6.0 m @ 2.5 gpt
- 33.0 m @ 1.2 gpt
- 13.0 m @ 1.1 gpt
- 5.0 m @ 3.2 gpt**
- 8.0 m @ 2.8 gpt
- 13.0 m @ 1.7 gpt
- 7.0 m @ 1.5 gpt
- 2.0 m @ 10.6 gpt
- 4.0 m @ 3.6 gpt
- 14.0 m @ 1.3 gpt
- 29.0 m @ 0.7 gpt
- 20.0 m @ 1.1 gpt